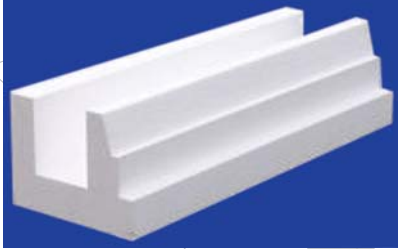
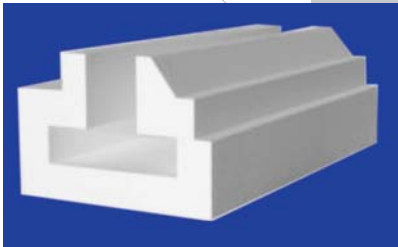




# SUPER GRUND



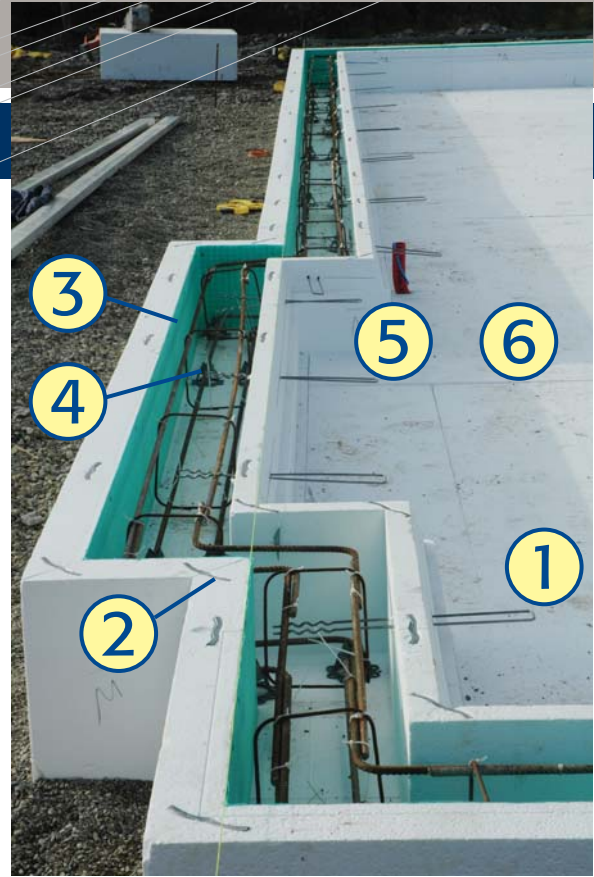
Lightweight Structures (F Profile)



Heavy Weight Structure (T Profile)

The Supergrund system includes the following accessories:

- 1 Ring Beam to Slab ties
- 2 Ring Beam Joiners
- 3 Release membrane
- 4 Steel supports
- 5 Insulation fixing nails
- 6 3 or 4 Layers of 100mm EPS Floor Insulation Panels



## 8 EASY STEPS TO INSTALL THE FOUNDATION SYSTEM



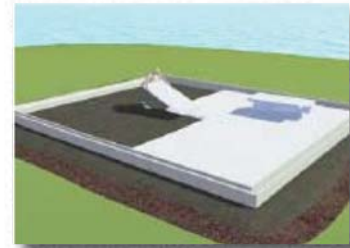
1 Strip site and lay compacted hardcore compacted in 50mm layers (18 -35 mm hardcore). Incorporate Radon sump and pipework



2 Place gas membrane/dpm. Turn perimeter down and allow 1m overlap. Lay 3-8mm stone blinding up to 50mm deep. Set out corners.



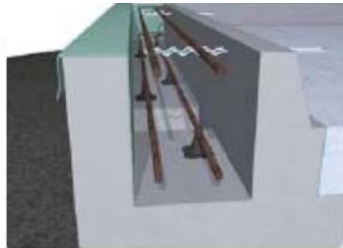
3 Continue placement of ring beam profiles. Trim profiles as necessary to achieve a tight fit. Join profiles with galvanised steel combs.



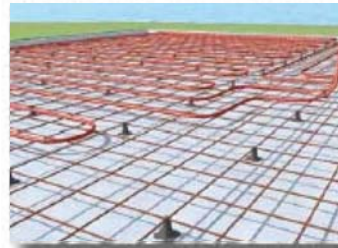
4 Place first 2 layers of floor insulation sheets over the remaining foundation. Overlap sheets to achieve continuity of insulation.



5 Install the final layer of insulation. Secure with EPS nails.



6 Install 5mm U-Sine ties through the ring beam profiles and place steel reinforcing according to supplied design.



7 Install reinforcing steel mesh according to design. Underfloor heating system can be installed at this stage.



8 Insulated foundation system is now complete and ready to take 100mm concrete.

If you are interested in obtaining a quotation for your building project please contact us at [supergrund@aerobord.ie](mailto:supergrund@aerobord.ie) or at the telephone numbers below:

**Aerobord**  
**Springvale**

SEPTEMBER 2009

Aerobord  
Askeaton  
Co. Limerick  
Tel: 1 800 604605 (From ROI)

Springvale EPS  
75 Springvale Road, Ballyclare  
Co. Antrim BT39 OSS  
Tel: 028 9334 0203 (From NI)