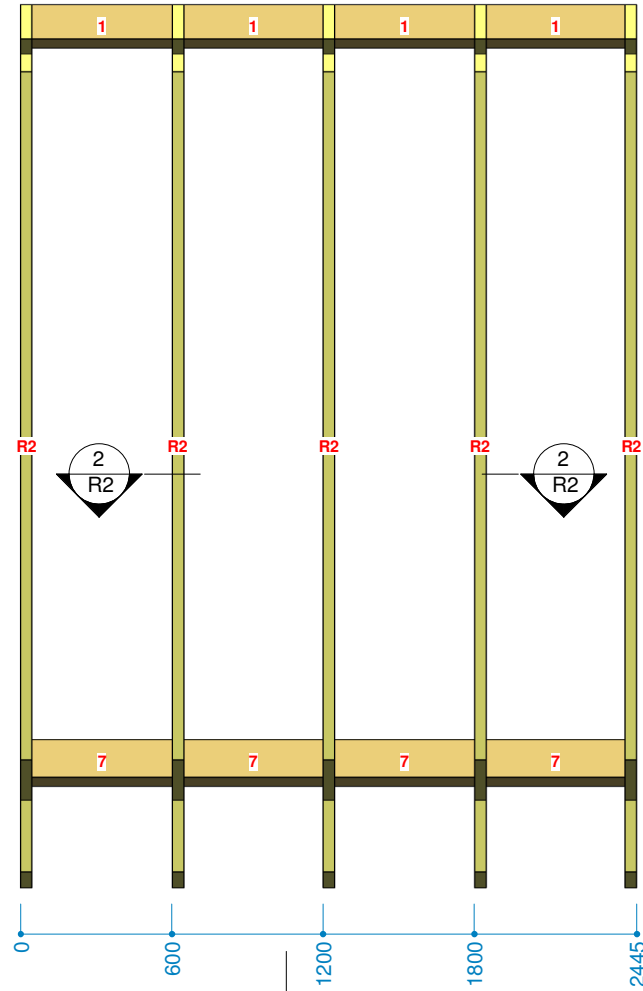
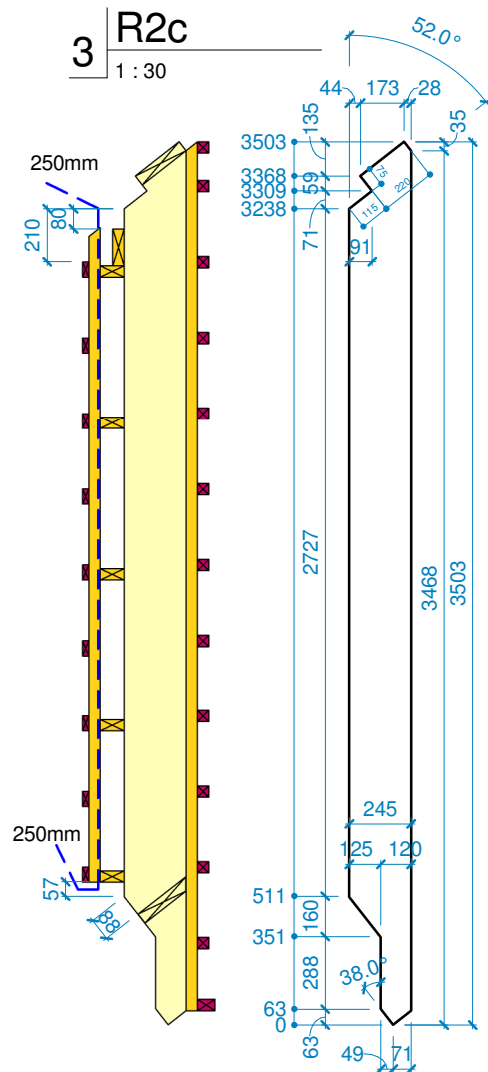


R1 wood schedule							
Nr.	Family and Type	b	h	L	Length	Count	Volume
1	H1: 220x45	45	220	426		1	0.00 m³
2	H1: 220x45	45	220	555		2	0.01 m³
3	H3: 220x45 (cut_336)	45	220	536		1	0.00 m³
4	H-bar_gr38: 45x145	145	45	1716		1	0.01 m³
5	H-bar_gr38: 95x45	45	95	1716		5	0.04 m³
6	H-bar_gr38_up: 25x60	60	25	1671		9	0.02 m³
7	H-bar_gr38_up: 45x45	45	45	2297		12	0.06 m³
8	H-bar_gr38_up: 70x45	45	70	2297		1	0.01 m³
9	H_gr38: 120x45	45	120	536		7	0.02 m³
10	H_slope: 240x45	45	240	426		1	0.00 m³
11	H_slope: 240x45	45	240	555		2	0.01 m³
R2a	R6: 120x45	45	120	3564		1	0.02 m³
R2	R9: 245x45	45	245	3661		4	0.14 m³
12	S-bar_4: 45x45 (38gr)	45	45	2596		5	0.03 m³
13	S-bar_4: 45x45 (38gr)	45	45	3448		6	0.04 m³
14	S_3: 120x45 (38gr)	45	120	406		1	0.00 m³
15	S_3: 120x45 (38gr)	45	120	555		4	0.01 m³
16	S_4: 120x45 (38gr)	45	120	177		1	0.00 m³
Grand total: 64							0.43 m³

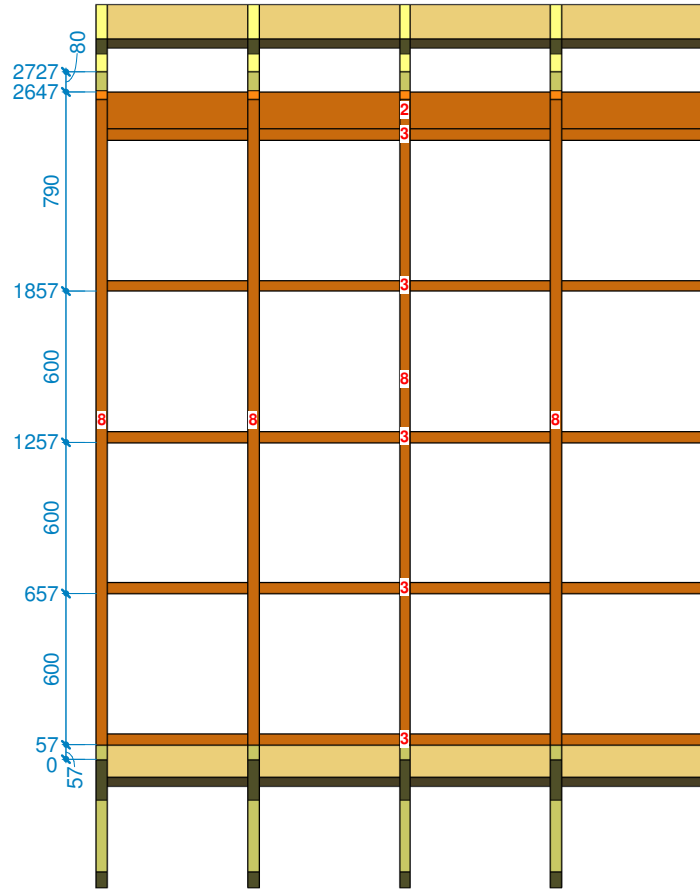
1 R2a  
1:30



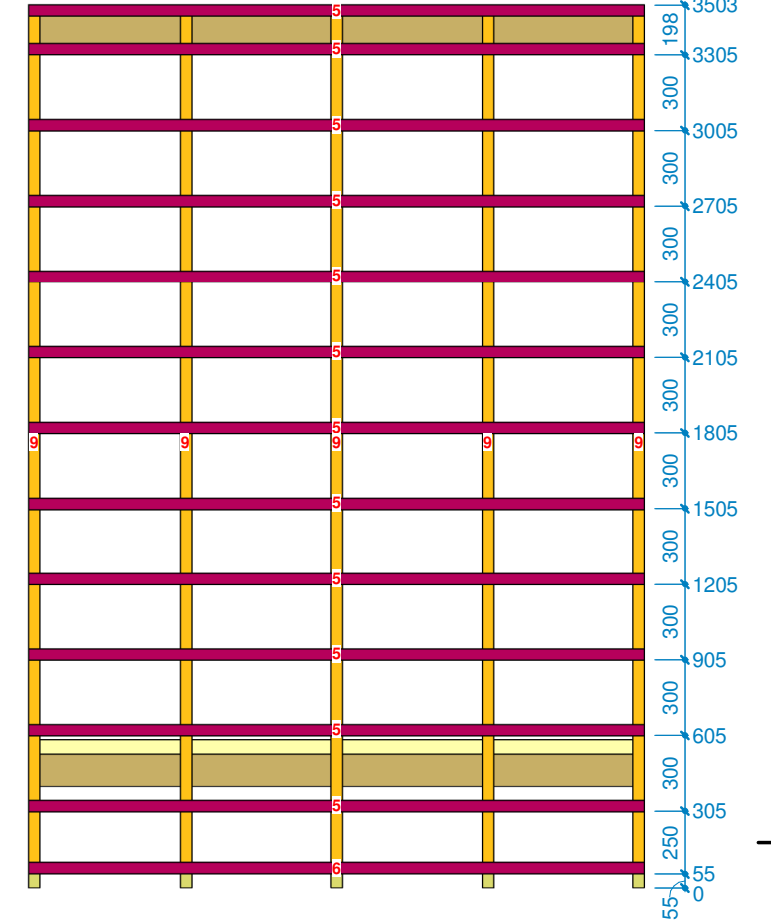
3 R2c  
1:30



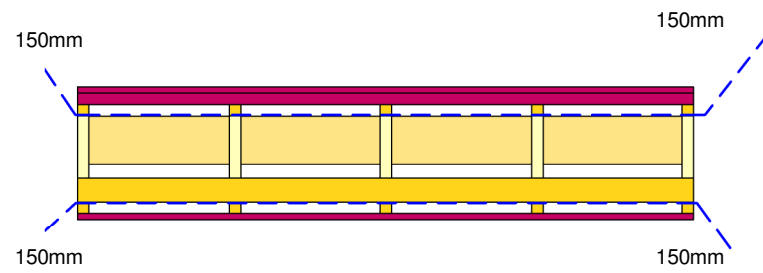
4 R2d  
1:30



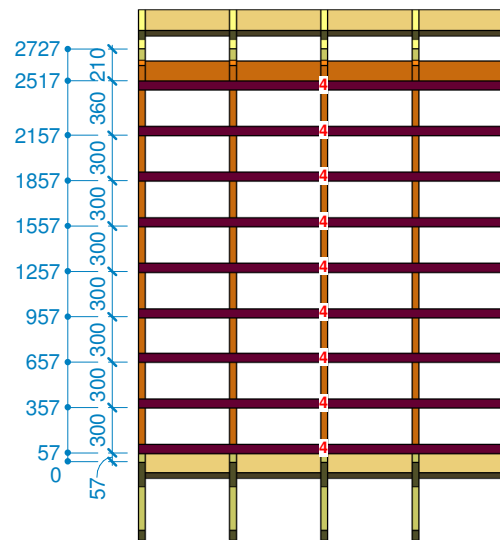
6 R2f  
1:30



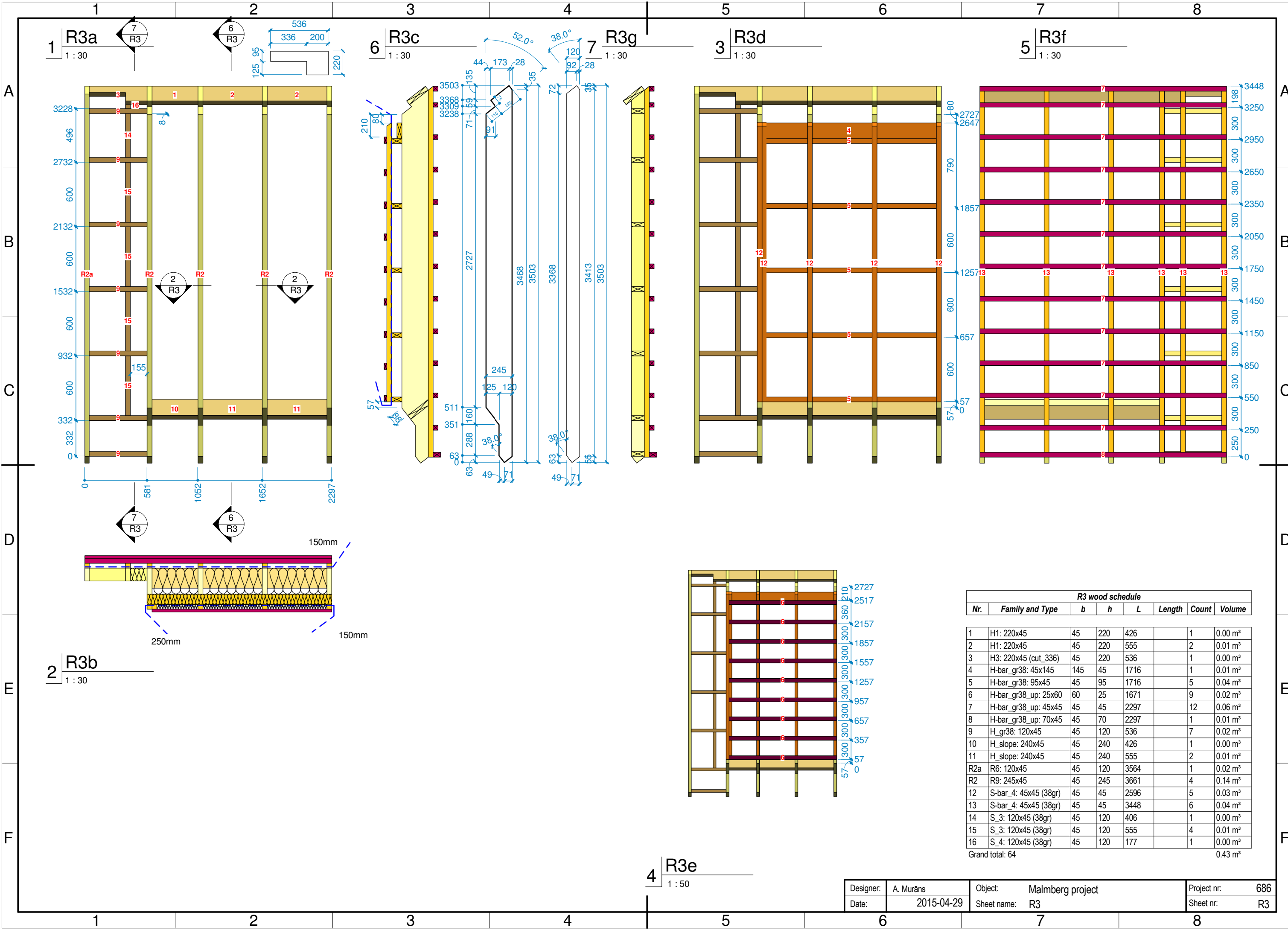
2 R2b  
1:30



5 R2e  
1:50



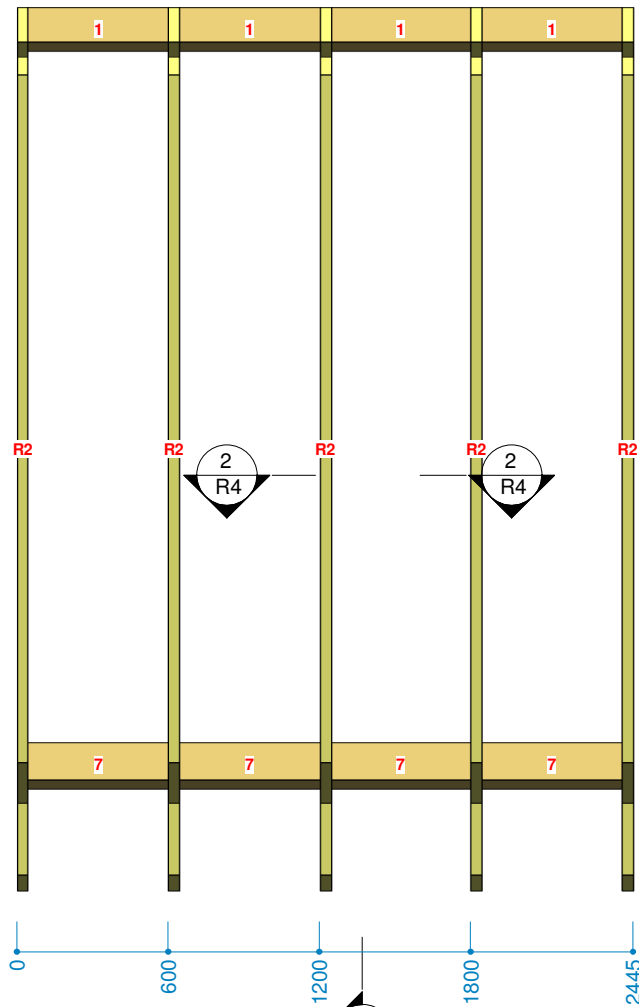
R2 wood schedule							
Nr.	Family and Type	b	h	L	Length	Count	Volume
1	H1: 220x45	45	220	555		4	0.02 m³
2	H-bar_gr38: 45x145	145	45	2445		1	0.02 m³
3	H-bar_gr38: 95x45	45	95	2445		5	0.05 m³
4	H-bar_gr38_up: 25x60	60	25	2445		9	0.03 m³
5	H-bar_gr38_up: 45x45	45	45	2445		12	0.06 m³
6	H-bar_gr38_up: 70x45	45	70	2445		1	0.01 m³
7	H_slope: 240x45	45	240	555		4	0.02 m³
R2	R9: 245x45	45	245	3661		5	0.17 m³
8	S-bar_4: 45x45 (38gr)	45	45	2596		5	0.03 m³
9	S-bar_4: 45x45 (38gr)	45	45	3448		5	0.03 m³
Grand total: 51							0.45 m³



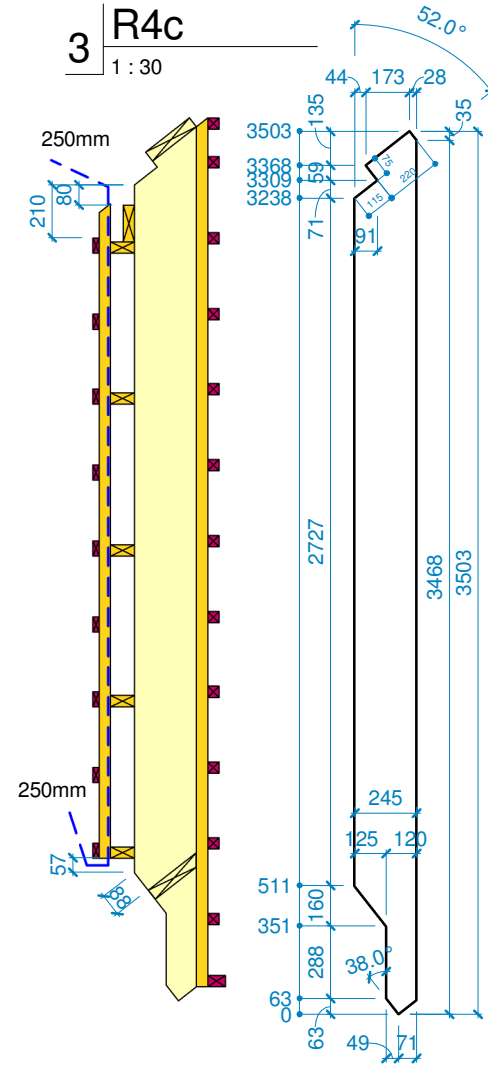
**R3 wood schedule**

Nr.	Family and Type	b	h	L	Length	Count	Volume
1	H1: 220x45	45	220	426		1	0.00 m³
2	H1: 220x45	45	220	555		2	0.01 m³
3	H3: 220x45 (cut_336)	45	220	536		1	0.00 m³
4	H-bar_gr38: 45x145	145	45	1716		1	0.01 m³
5	H-bar_gr38: 95x45	45	95	1716		5	0.04 m³
6	H-bar_gr38_up: 25x60	60	25	1671		9	0.02 m³
7	H-bar_gr38_up: 45x45	45	45	2297		12	0.06 m³
8	H-bar_gr38_up: 70x45	45	70	2297		1	0.01 m³
9	H_gr38: 120x45	45	120	536		7	0.02 m³
10	H_slope: 240x45	45	240	426		1	0.00 m³
11	H_slope: 240x45	45	240	555		2	0.01 m³
R2a	R6: 120x45	45	120	3564		1	0.02 m³
R2	R9: 245x45	45	245	3661		4	0.14 m³
12	S-bar_4: 45x45 (38gr)	45	45	2596		5	0.03 m³
13	S-bar_4: 45x45 (38gr)	45	45	3448		6	0.04 m³
14	S_3: 120x45 (38gr)	45	120	406		1	0.00 m³
15	S_3: 120x45 (38gr)	45	120	555		4	0.01 m³
16	S_4: 120x45 (38gr)	45	120	177		1	0.00 m³
Grand total: 64							0.43 m³

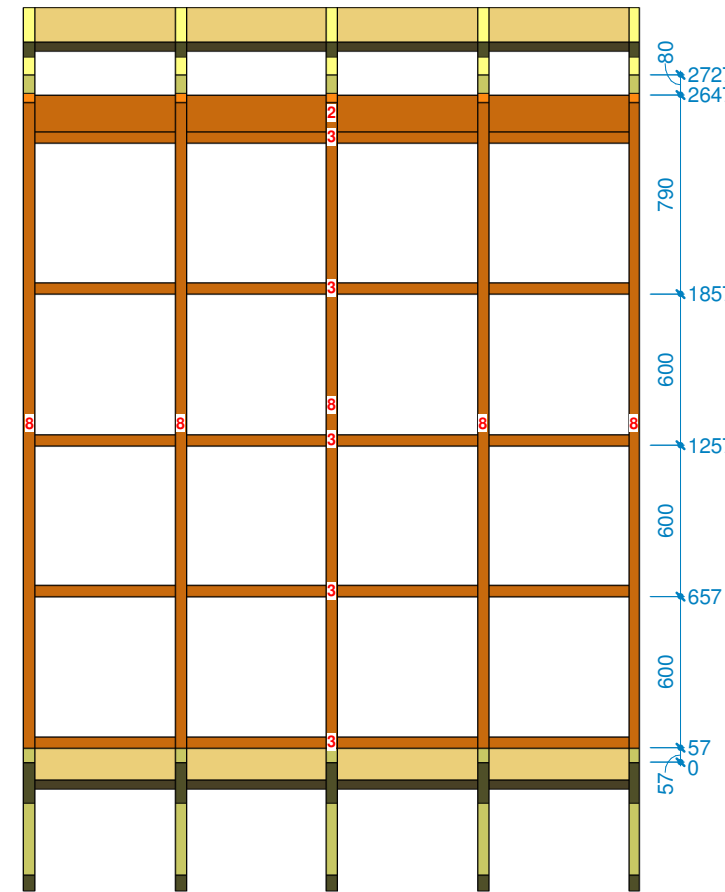
1 R4a  
1 : 30



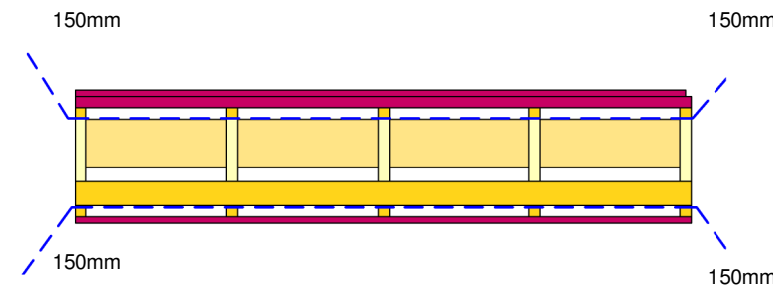
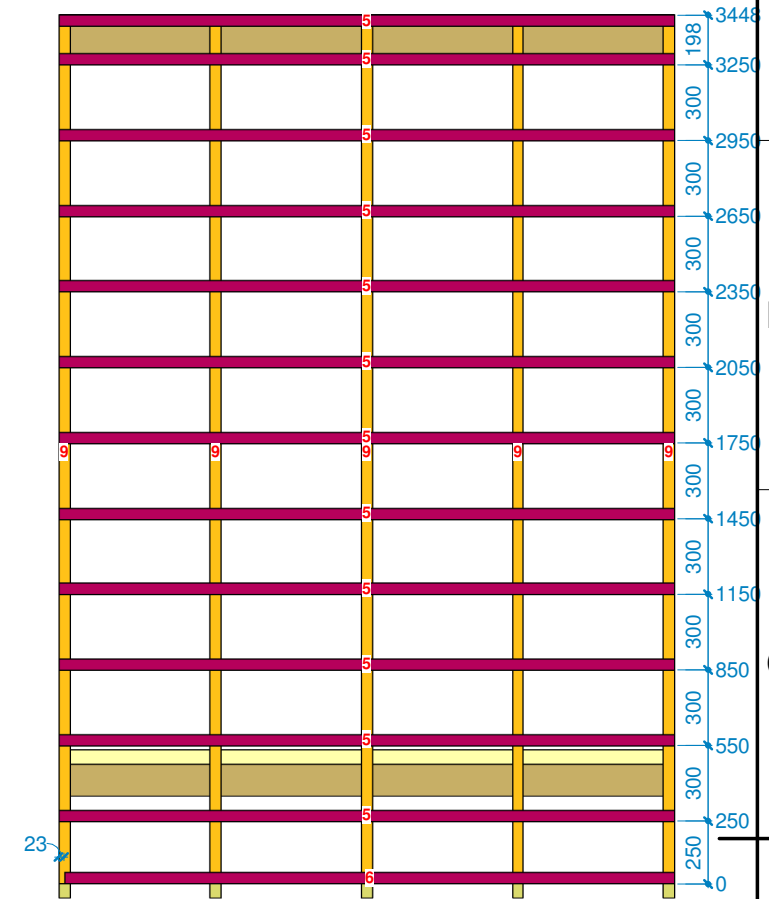
3 R4c  
1 : 30



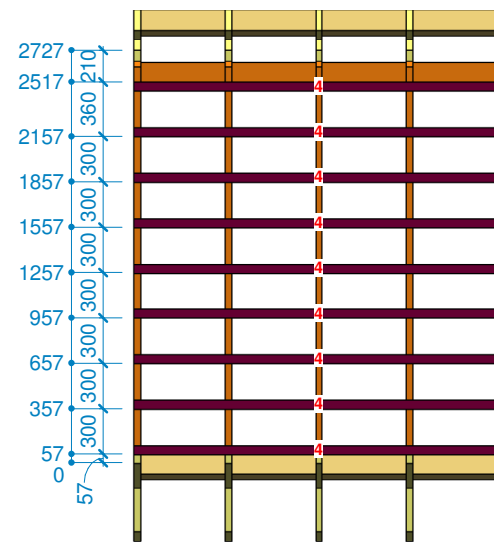
4 R4d  
1 : 30



6 R4f  
1 : 30



2 R4b  
1 : 30



5 R4e  
1 : 50

R4 wood schedule							
Nr.	Family and Type	b	h	L	Length	Count	Volume
1	H1: 220x45	45	220	555		4	0.02 m³
2	H-bar_gr38: 45x145	145	45	2445		1	0.02 m³
3	H-bar_gr38: 95x45	45	95	2445		5	0.05 m³
4	H-bar_gr38_up: 25x60	60	25	2445		9	0.03 m³
5	H-bar_gr38_up: 45x45	45	45	2445		12	0.06 m³
6	H-bar_gr38_up: 70x45	45	70	2423		1	0.01 m³
7	H_slope: 240x45	45	240	555		4	0.02 m³
R2	R9: 245x45	45	245	3661		5	0.17 m³
8	S-bar_4: 45x45 (38gr)	45	45	2596		5	0.03 m³
9	S-bar_4: 45x45 (38gr)	45	45	3448		5	0.03 m³
Grand total: 51							0.45 m³